

POST FIXTURE

Operate. Optimize. Analyze.

Post-Fixture is an holistic application used to manage voyage operations and to calculate and maintain financial information during a voyage. The application helps the Operations department to obtain daily reports for a given voyage and track the expenses involved. The application calculates all real-time expenses, payments and cash flows, and can also track consignment, bunker purchase, speed, invoicing, and conduct demurrage, or despatch calculations.

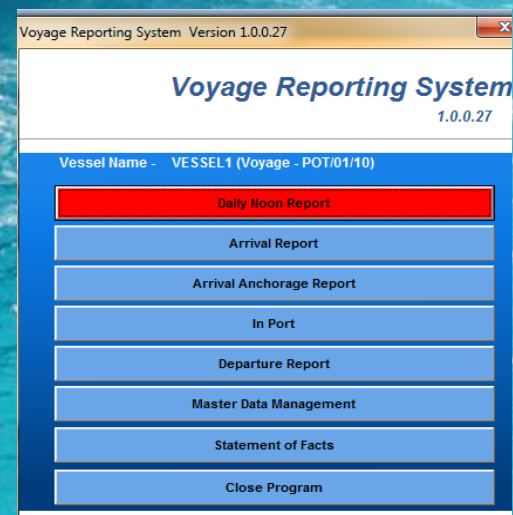
- **MASTERS**
- **VOYAGE DETAILS**
- **OPERATIONS**
- **SOA & CASH FLOW**
- **REPORTS**
- **CONSIGNMENT**
- **TRACKER**
- **VOYAGE REPORTING**
- **VESSEL MONITOR**
- **LAY TIME**
- **INVOICE**
- **HELP**

BHUBANESWAR OFFICE:

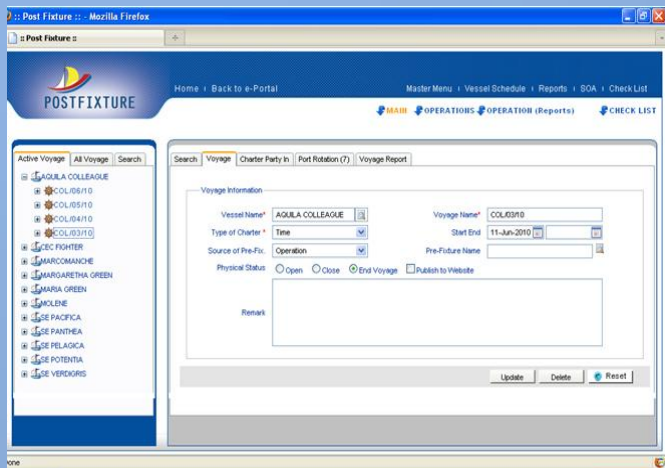
Esquire Infolab Systems (P) Ltd
Plot No. 2630/3, 2nd Floor, Kedar Gouri Vihar
Bhubaneswar-751014 (INDIA)
Ph.: +91-674-6511388 /2431329
Mobile: +91-993 856 7243
info@esquire.co.in | www.esquire.co.in

MUMBAI CONTACT:

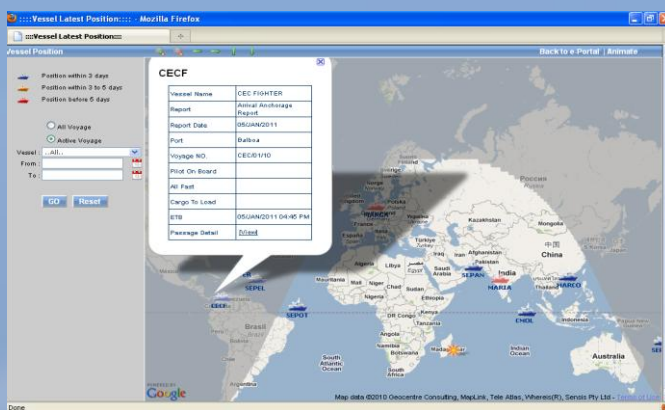
Esquire Infolab Systems (P) Ltd
Mobile: +91-982 151 2341
Ph: +91- 022- 660 5023



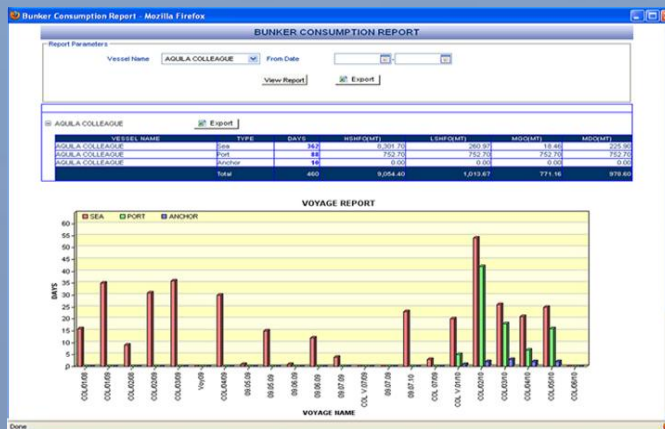
POST FIXTURE



Post Fixture Home



Vessel Monitor with DNR drill down



Graphical report on bunker consumption

BHUBANESWAR OFFICE:

Esquire Infolab Systems (P) Ltd
Plot No. 2630/3, 2nd Floor, Kedar Gouri Vihar
Bhubaneswar-751014 (INDIA)
Ph.: +91-674-6511388 / 2431329
Mobile: +91-993 856 7243
info@esquire.co.in | www.esquire.co.in

MUMBAI CONTACT:

Esquire Infolab Systems (P) Ltd
Mobile: +91-982 151 2341
Ph: +91- 022- 660 5023

Why Post Fixture?

- **Keep track of expenses & cargo:**
Post-Fixture helps you keep track of all voyage-related expenses and cargo in a competitive environment
- **Get a 360-degree view of operations:**
Post-Fixture is a web-based application that integrates with other modules such as Noon reporting, vessel position, and Pre-fixture. This gives the user a 360-degree view of real operations and their impact
- **Support sound decisions:**
Extra features such as the map viewer and vessel tracker help you take quick and sound decisions; information on vessel location and planned voyages enables the users to get an overview of voyages without being delayed by human interaction
- **See the complete picture:**
Post-fixture offers Geographic Information System (GIS) based vessel and consignment tracker with drill-down features. This enables the user to drill down in the data to easily reach the desired level of information
- **Keep track of financial data:**
The application obtains financial data, which enables users to keep track of financial data such as statement of accounts, cash-flows, invoices, lay time calculations, and statement of facts
- **Validate entries:**
The application automatically checks the integrity of entries and reports back if the numbers are unusual. This ensures greater data integrity as human errors are easily detected
- **Flexible data entry:**
Manual as well as automatic data capture from MS excel sheets, xml files, and reporting, with editable and user defined reports. Auto parsing of data coming from vessels as email attachments.
- **Based on a Service-Oriented Architecture (SOA):**
SOA helps organisations respond faster and more cost-effectively to changing market conditions, as the SOA makes it possible to look at a problem holistically, e.g. by integrating all services in a voyage fixture such as chartering dept., finance dept., operations dept. in one single process
- **Extensive data and reporting with handy features:**
Exhaustive reporting and analysis of data such as DNRs, cash flow, hire/purchase, vessel/cargo tracking, lay time, invoice, auto alerts, animations, voyages, User-based access privileges and more...